



Meridian

Advert, Jingle and Music Scheduling

What Is It ?

A powerful scheduling package for radio broadcasters both large and small. Meridian is a complete scheduling package for radio stations - it utilises a database system to enable the placement of adverts, jingles and songs within a set of rules. These rules can be enforced on a daily/hourly basis - essential for setting-up "no repeat daytimes", love-song shows and a quick change of programming to reflect the weather!

Meridian PRO v1.0 revision 104
Licenced to **WEB BETA**
13 days remaining

Library | Clocks | Rules/Policies | Schedules (26) | Export | Settings | Help | About | Exit

Adverts : 0
Commands/Notes : 0
Jingles : 0
Packages : 0
Promos : 0
Songs : 0
VoiceTracks : 0

23:47:35 WEB BETA Charlie's Test.dbf

- Export to CSV
- Export to HTML
- Export to M3U
- Send to Playout
 - AudioEnhanceDPS
 - DARP
 - EncoDADpro32
 - JockMaster
 - mAirList XML
 - PSquared Myriad
 - Raduga
 - StationPlaylist Studio

Meridian PRO
1.0 revision 104

© Charlie Davy 2010
[Meridian Home Page](#)

Registered to : **WEB BETA**
12 days remaining

Machine Code :
xXcZw27bKbnYMJe0sJGquw==

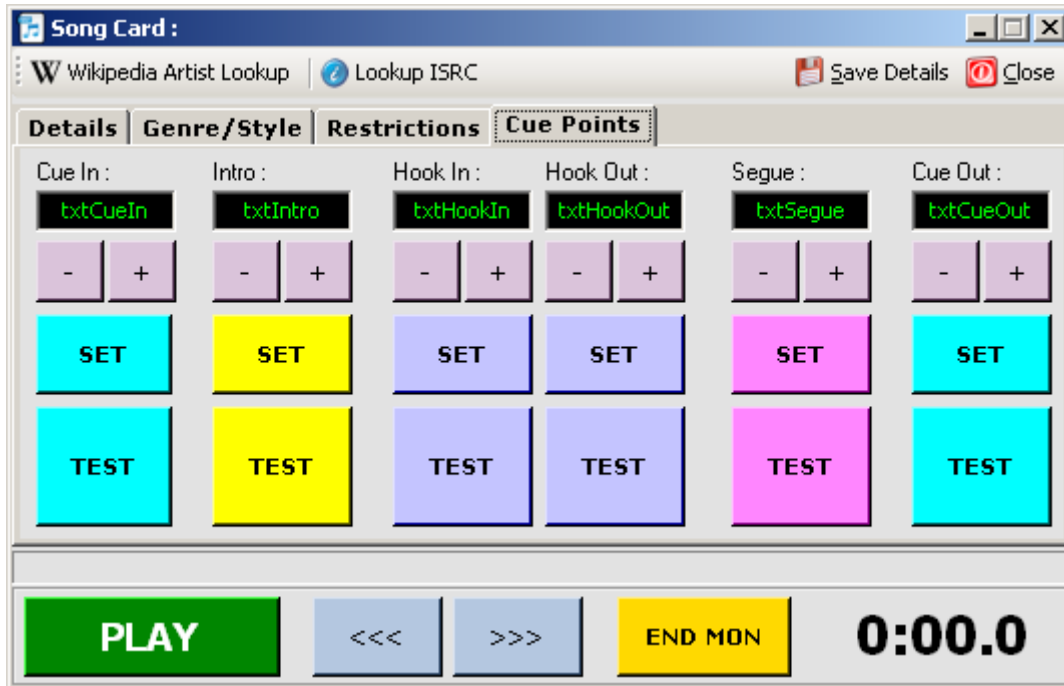
Open a new e-mail, select **PASTE** and send it off!



Meridian [CON'T]

A particular trait of RSL and Community stations is the frequent deviation from a pre-scheduled playlist and playing songs that the presenter wants to hear (or the listener). When used with JockMaster, Meridian will take into account the playback history of songs allowing the next schedule run to take into account this history. It will also show you "non database" items such as those from a memory stick. There may also be a Reconcile feature where Meridian can read "as played" logs from 3rd-party playout applications.

A major concern for those who like to "tinker", especially home-users, bedroom DJs or small-scale stations is one of being able to import/export the data using Access/Excel or similar. All of the data you enter will be able to export to plain text files.



Share your databases... Pretty much all the schedulers "out there" operate a single database of audio - if you add comments, intro points and style/tempo data you then have to export that data and import it into your other station's scheduler databases so that the data matches up... Wouldn't it be great if you set an intro point on a song on your *Hits* format station, and your *Gold* sister-station automatically saw those changes on it's own database whilst still maintaining the station-specific category/rotation settings ?

Well, Meridian can take care of that for you... Oww yesh!

A single radio station running Meridian will use 2 databases: a master **audio** database and a **station** database. A 2-station group will use 3 databases: a master **audio** database and 2 **station** databases. Each station's clock templates and schedule history will be contained within their own station database whilst the main audio attributes are kept on a global database that everybody can access. This means that any songs which overlap your different formats can enjoy their own song separation and repeat/daypart-restrictions but globally inherit intro/segue timings, year/chart history and path/filename.

Should you chose to run the companion playout application, **JockMaster**, your station database will be updated with the "last played" details and Meridian will take this into account when it does it's next schedule run. This means that you can use any studio for any of your radio stations - just log into the appropriate station database in **JockMaster** and you're on the air!

Features to be included:

- **Adverts, Jingles and Music can all be scheduled from ONE package**
Tired of using 3 different programs to keep your station running ? Meridian is an all-in-one solution and can manage client details, promo kill-dates and your complex (or really simple) music rotations. Naturally, Meridian allows networked computers to share a common database, so whilst the accounts dept can manage the commercials, the production studio can be loading new songs into it.
- **Smart Audio Importing**
Meridian will import your audio files either individually or from a whole folder. It will read APE/ID3 tags for extended data and even take meta-data from mAIRList's MMD XML files. Duplicate files will be shown and you will be offered the change to ignore any duplicate songs/jingles.
- **Export to File**
Meridian will export your database/s to a delimited text file, HTML or write to the file's ID3 tags - whilst tagging ID3s is a fairly lengthy process, if you move the audio files around the data will stay with the file.



Meridian [CON'T]

- **Grid-based Clock Management**

Using a grid/spreadsheet to programme your clocks allows you to specify item-specifics such as Style, Year or EndType

- **Auto Scheduling**

OK, so you went to the pub and forgot to compile tomorrow's schedule... Not a problem: Meridian will automatically schedule the next day's log if it doesn't exist at 11:45pm. No matter what playout system you're using - Meridian will keep you on the air.

- **Style/Genre+Tempo Codes**

Gives the ability to schedule songs next to their matching stagers in terms of style (dance, pop etc) and Tempo (slow, medium, fast etc). Can also be used to limit the amount of styles used per hour, eg: no more than 5 "disco" tracks and never play more than 2 in a row. This sort of rule can be set on a time-basis so that your weekend party shows play more "disco" than "love" ;) The Style can be imported directly from the ID3 "Genre" tag.

- **Network and Multiple Station Support**

The unique database structure allows for a common audio database that holds the main audio attributes (artist, title, filename, intro, segue, year etc) whilst a 2nd database unique to each station stores the Clocks, Schedules and Schedule History - this allows you to manage your audio and have the changes reflected across ALL of the stations in your group.

Related Artists

Meridian can be told to keep solo performers away from their former groups and other band members.

- **Print-out of your Show Running Orders**

Scheduled hours may be printed for your DJs showing as much (or as little) detail as you wish: Artist, Title, Year, Intro, Notes etc.

What about support ?

During your licence period, you are entitled to priority e-mail support (a response within 12 hours) and any updates that are issued to the software. There will also be a forum where you can ask questions, share ideas and report problems etc.

Buying Meridian

A 14-day activation key is included with the download, you may try out the software in full for this period. After this time, you will need to enter a custom key - licence costs are fixed regardless of usage (ie: home, non-profit or professional). Updates that I issue can be used for the duration of your licence period. With the exception of the *roaming licence*, activation keys are valid only for the machine that you licence it for - If you plan to use Meridian on different computers, a roaming licence can be granted that ensures that you can only run multiple copies of Meridian that you are licenced for.

The following prices may be subject to change!

Basic Edition

Ideal for home users who need a music library database and audio file tagger...

- *Import Songs individually or by folder*
- *Read/Write APE/ID3 file tags*
- *Export your library to CSV and M3U*

£tba

The Basic version of Meridian does NOT have any scheduling functions.

Standard Edition

Suitable for professional broadcasters and those with special requirements...

- *8 Music Categories, 5 Jingle Groups*
- *Export to CSV, M3U, Tabbed Text File and 1 Custom Automation Format*

- *Multiple databases/stations can be managed from a single computer*

£tba

Pro Edition

Suitable for professional broadcasters and those with special requirements...

- *Unlimited Music Categories and Jingle Groups*
- *Export to CSV, M3U, Tabbed Text File and Multiple Custom Automation Formats*

- *Multiple databases/stations can be managed from a single computer*

£tba

